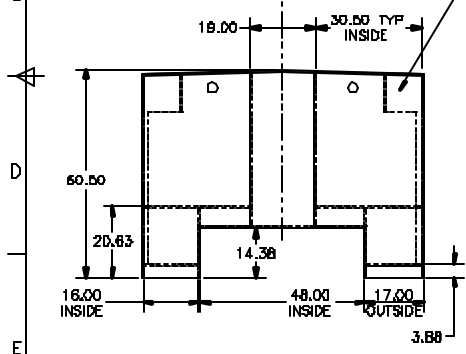
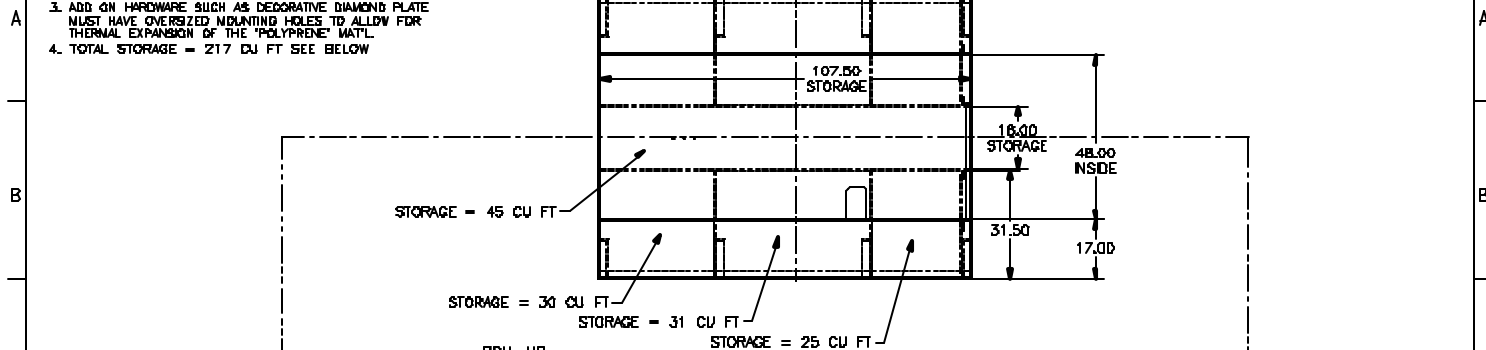


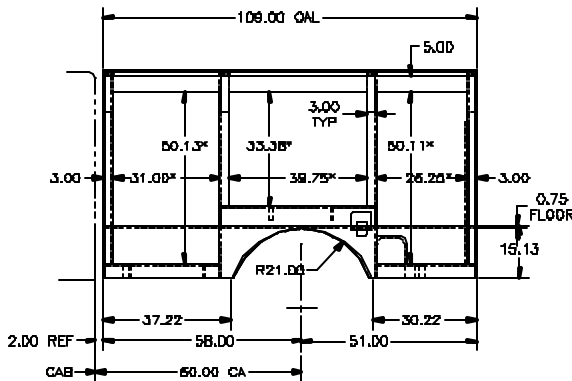
- NOTES:
1. DIM'S MARKED WITH \* ARE DOOR OPENINGS.
  2. DOORS MUST BE ORDERED  $3/8"$  NARROWER THAN THE DOOR OPENING TO ALLOW FOR THERMAL CONTRACTION OF THE 'POLYPRENE' MATL.
  3. ADD ON HARDWARE SUCH AS DECORATIVE DIAMOND PLATE MUST HAVE OVERSIZED MOUNTING HOLES TO ALLOW FOR THERMAL EXPANSION OF THE 'POLYPRENE' MATL.
  4. TOTAL STORAGE = 217 CU FT SEE BELOW

TOP VIEW

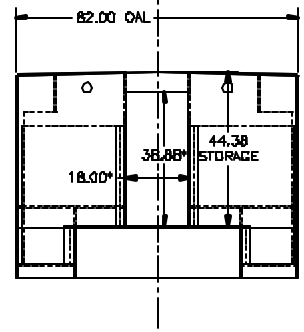
Rev No. Revision date Date Signature Checked



FRONT VIEW



DRIVER SIDE



REAR VIEW

THIS DRAWING IS THE EXCLUSIVE PROPERTY OF FRD POLY OF AMERICA, INC./POLYBILT ISSUED IN STRICT CONFIDENCE AND SHALL NOT BE DISCLOSED IN WHOLE OR IN PART TO ANY OTHER PARTY AND THAT IT SHALL NOT BE COPIED IN ANY FORM WITHOUT THE PRIOR WRITTEN PERMISSION OF FRD POLY OF AMERICA, INC./POLYBILT

Notes Tank will not go into production until customer has signed and dated final drawing.

Customer Acceptance Signature Required



1821 N.W. 57th Street  
Gaines, Florida 34470  
Ph: (352) 828-1414  
Fax: (352) 828-8248

Unless otherwise specified, dimensions are in inches and tolerance is  $\pm 1/8"$

Foam Capacity

Water Capacity

Total Capacity

N/A

Drawn by

N WALLASK

Date

2/28/06

Scale

YES

Customer

POLYBILT

RescuPak

Sheet

1 OF 1

P.O. No.

WHITE

Tank No.

Dwg. No.

RescuPak

Rev.

0

Customer	Signature	Date					
Engineering By	Signature	Date					
Checked By	Signature	Date					