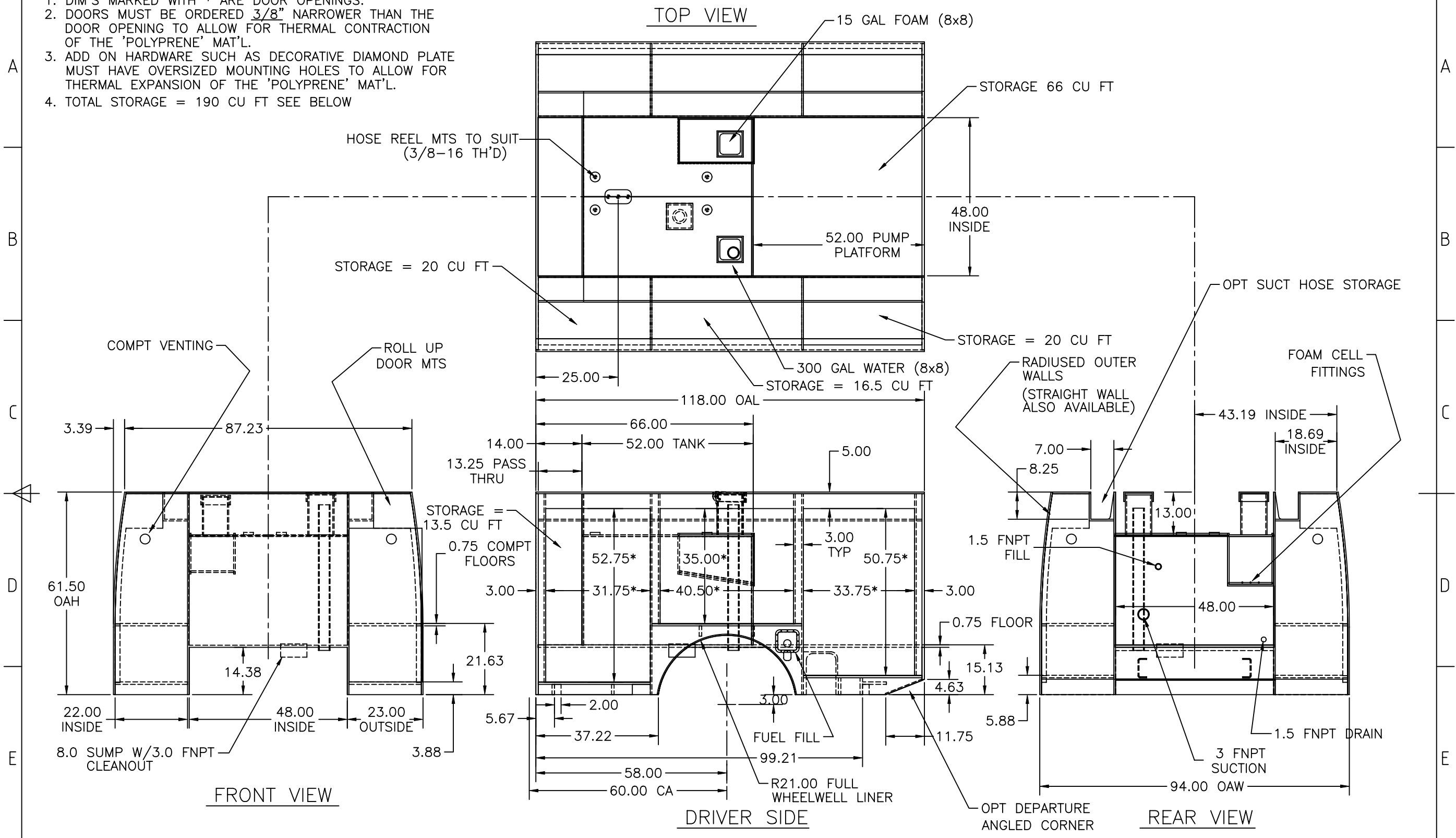


NOTES:

1. DIM'S MARKED WITH \* ARE DOOR OPENINGS.
2. DOORS MUST BE ORDERED 3/8" NARROWER THAN THE DOOR OPENING TO ALLOW FOR THERMAL CONTRACTION OF THE 'POLYPRENE' MAT'L.
3. ADD ON HARDWARE SUCH AS DECORATIVE DIAMOND PLATE MUST HAVE OVERSIZED MOUNTING HOLES TO ALLOW FOR THERMAL EXPANSION OF THE 'POLYPRENE' MAT'L.
4. TOTAL STORAGE = 190 CU FT SEE BELOW

RevNo	Revision note	Date	Signature	Checked




THIS DRAWING IS THE EXCLUSIVE PROPERTY OF PRO POLY OF AMERICA, INC./POLYBILT ISSUED IN STRICT CONFIDENCE AND SHALL NOT BE DISCLOSED IN WHOLE OR IN PART TO ANY OTHER PARTY AND THAT IT SHALL NOT BE COPIED IN ANY FORM WITHOUT THE PRIOR WRITTEN PERMISSION OF PRO POLY OF AMERICA, INC./POLYBILT

Note: Tank will not go into production until customer has signed and dated final drawing.

**Customer Acceptance Signature Required**

Customer	Signature	Date
Engineering By	Signature	Date
Checked By	Signature	Date

  
 1821 N.W. 57th Street  
 Ocala, Florida 34475  
 Ph.(352)629-1414  
 Fax(352)629-6049  
 Unless otherwise specified, dimensions are in inches and tolerance is ± 1/8"

Foam Capacity	15 GAL
Water Capacity	300 GAL
Total Capacity	315 GAL
Drawn by	N WALLASK
Date	7/6/05

Scale	YES
P.O. No.	Customer
W/PASS THRU FOR POLYBILT 'POLYPAK' FORD F450/550	

Finish	PER CUSTOMER
Tank No.	INTEGRAL
Dwg. No.	60CA POLYPAK FORD
Sheet	1
Rev.	F